

BACK TO TRACK

Be amazed by our four heroes, who are not merely guardians of your safety, but gateways to a universe where the virtual blends with the real, illuminated by sparkling lights and painted with colours so vibrant that they seem to spring from a dream.



The AERON GP FIM, SKWAL i3 ZARCO GP de FRANCE, D SKWAL 3 FIRSTLAP, and RIDILL 2 Raging Beast. These helmets are symbiosis of cutting-edge technology and unbridled imagination, promising a driving experience that transports you to a world where anything is possible.



The AERON GP FIM, a technological feat that combines lightness and performance, complies with UNECE 22-06 standards and is designed for competition. Its revolutionary A2S aerodynamic system significantly reduces flag effect (80%), turbulence (50%) and drag (5%), promising exceptional stability at high speeds. With its multiple air intakes (5) and extractors (7), it ensures optimal ventilation. Its COVA shell (Carbon On View & Aramid) offers superior shock absorption, while its ergonomic interior maximises comfort. Its Class optic 1 visor, treated anti-scratch and anti-fog, is equipped with a quick release system. It also includes specific racing accessories, such as a smoked visor and tear-offs. Every line of this helmet tells a story of cutting-edge engineering, challenges met, and the pursuit of perfection. It has already proven itself on the most formidable Grand Prix circuits, combining technology and performance. Its design, inspired by invisible forces, seems almost alive, as if the carbon were animated, telling stories of victories.

The AERON GP FIM is more than just a helmet: it's an extension of the rider, a symbol of mastery, speed, and pure passion. It is ready to accompany you in every curve, every straight line, every challenge the track presents to you.

SKWAL i3 Zarco GP De France

Embark on a journey to the heart of innovation with the Skwal i3 Zarco GP de France. Equipped with integrated LEDs, this helmet shines with a futuristic glow, offering visibility and style. Its High-Impact LEXAN™ polycarbonate structure and sophisticated ventilation systems envelop you in exceptional comfort.

This helmet is the perfect blend of technology and safety, with a Pinlock 70 Max Vision anti-fog visor and a UV380 treated integrated sun visor. It is the result of a collaboration between our legendary rider and an urban artist passionate about speed. Its graphics, inspired by racing circuits and high-speed light flashes, pay tribute to adrenaline and the art of pushing oneself.

Each line recalls the precise drifts of tyres and each interwoven pattern symbolises the swirling thoughts of a rider before a race. Each curve is a story, a victory or a defeat, making this helmet much more than a protective object.

Let yourself be swept away in a whirlwind of sensations, where speed and magic meet in a burst of pure adrenaline. A vibrant work of art that echoes those unique moments when tyres skim the asphalt. Already admired on our iconic Aeron GP, this creation is now available on our Skwal i3.

Prepare to push your limits and take the track by storm with style and determination.

D-SKWAL3 Firstlap.

Get ready to vibrate with the D-Skwal 3 Firstlap. With its design inspired by the world of racing, this helmet is a true fortress. For the most daring, it's time to celebrate the return to the track with a sleek and avant-garde look. Its class 1 optical anti-scratch visor is ready to receive a Pinlock® Maxvision 70. Inside, soft and refreshing ALVEOTECH textiles offer you lasting comfort.

Thanks to its 2 air intakes and 2 air outlets, optimal ventilation is ensured for maximum comfort in all seasons. The D-Skwal 3 Firstlap is a true sculpture in motion, a living representation of speed and power. Its graphics, which draw their inspiration from the very essence of racing, are a symphony of fluid and dynamic lines, propelling forward like a racing car in full acceleration.

The vibrant and sharp colours are a reminder of the contrast between the calm of a starting line and the explosion of energy when a rider takes off on the track. The name Firstlap is no accident: this helmet captures that precise moment when everything begins, where the first straight line marks the entry into a high-speed adventure.

You're not here to follow the race, but to lead it.

D-SKWAL3 Raging Beast

Allow us to introduce you to the RIDILL 2 Raging Beast. It is not just an accessory, but a true symbol of raw energy and an insatiable thirst for victory. Imagine for a moment, during a decisive race, a pilot and a raging beast, united by the same obsession for speed. In merging, the beast infused its rage into the helmet, each vibrant colour becoming a reflection of the adrenaline and passion of the pilot.

But don't be mistaken, this helmet is much more than a symbol. Thanks to the Best Fit, the RIDILL 2 conforms to your morphology like a second skin, and a patented textile fastening system enhances comfort. It offers a range of optical features, including a variable thickness screen without visual distortion and an anti-fog sun visor that provides UV380 protection. The screen can be disassembled without any tools, making this helmet unmatched in convenience.

It's the union of wild instinct and human determination, transforming each race into an exhilarating quest for surpassing oneself.



BACK TO TRACK



Welcome, to an epic imbued with marvels, where the extraordinary becomes ordinary.

1 VENTILATIONS :

5 air inlets (+25%) and 7 air extractors (+77%).
NEW GENERATION COVA (CARBON ON VIEW & ARAMID).
Thermosetting resin, excellent shock absorption.

3 A2S - ADAPTIVE AERO SYSTEM :

- Flag effect: -80% / Turbulence: -50% / Trainee: -5%.
- Straight line turbulence damper.
- Auto adaptation of the shape of the spoiler to all back bumps.
- Self-adapting helmet to all racing conditions.
- Patented aerodynamic spoiler.
- Reduction of aerodynamic drag in curves.

2 PATENTED SCREEN MECHANICS :

- 4 anchor points.
- Quick Release Visor System.
- VISOR Friction Force Adjustment .Using the Allen key provided, you can adjust the friction force of your visor.



4 VISOR :

- Optical Class 1 screen, thickness 4.25 mm.
- Smoked screen + tear-off in the box.
- 7 screen colors available. VZ100



6 INTERIORS :

- Emergency Quick Release System.
- Quick and intuitive cheek removal.
- New "3D Pad" of cheeks.
- Removable ear pads.
- 2 summer/winter anti-fog masks.

5 CHINSTRAPS :

- Magnetic Auto-Lock on chin strap protections.
- Adjustable, removable and washable chin strap protections.
- Double D buckle in paralumen.



7 CHIN SUPPORT :

- EPU chin guard.
- double density (expanded polyurethane).

ERGO RACING CHIN JOINT:

- Provides stable support and lowers the position of the helmet behind the screen.



Weight : 1410 g (on a size M -full carbon- +/- 50g)
UNECE 22-06 standard
Size XS - XXL



BACK TO TRACK



Welcome, to an epic imbued with marvels, where the extraordinary becomes ordinary.

1 STRUCTURE :

A shell injected with High-Impact LEXAN™ polycarbonate.
With a high quality material that guarantees optimal mechanical and thermal performance from -10°C to 50°C.

2 VISOR :

Optical class 1:
Screen equipped with Pinlock® 70:
Sun visor with anti-scratch & anti-fog treatment UV380.

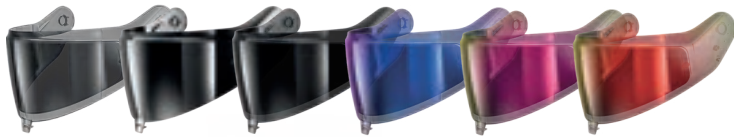
3 LEDs :

The SKWAL i3 is equipped with a standard LED lighting system.
ACTIVE LED SYSTEM. Thanks to the integration of a triaxial accelerometer, braking detection is done without any wired or Bluetooth connection!

The LEDs have a long battery life of 12 hours(2) and are powered by a fast-charging battery.



4 New patented system for rapid, tool-free screen extraction.
6 visor colors available VZ400



6 COMFORT :

A 3D scanning campaign allowed us to define the closest shoe base possible for your body type: the "BEST FIT" by SHARK.

5

Our second skin effect footwear combines no less than 5 high-tech textiles guaranteeing:

- premium quality finishes.
- semi-firm foams for exemplary support during use.
- remarkable watertightness and weathertightness.



7 AERODYNAMICS :

-Our CFD (Computational Fluid Dynamics) digital simulations allow us to offer:

- An aerodynamic profile offering optimal stability whatever your speed.
- Removal of negative effects of high speed swing ("buffering effect").
- Reduced aerodynamic noise and better sound insulation
- High-performance internal ventilation composed of 4 air inlets, and 4 venturi effect extractors + an air mesh screen position.

Weight: 1500 g (+/- 50gr)
UNECE 22-06 standard
Size XS-XXL

SKWAL i3



BACK TO TRACK



Welcome, to an epic imbued with marvels, where the extraordinary becomes ordinary.

1 STRUCTURE :

A shell injected with High-Impact LEXAN™ polycarbonate.
With a high quality material that guarantees optimal mechanical and thermal performance from -10°C to 50°C.

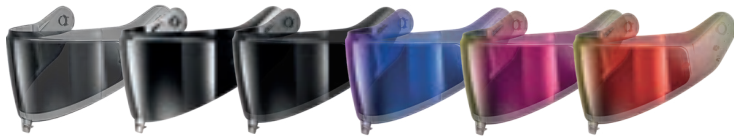
3 Multi-density EPS: Shell associated with specific liner
2 shell sizes.

2 ÉCRAN :

Optical class 1 :
Screen with variable thickness to avoid visual distortions.
Screen equipped with Pinlock® 70 :
equipped with an adjustment system
tension of the new film (external adjustment levers).
UV380 sunscreen and anti-scratch & anti-fog treatment



4 New patented system for rapid, tool-free screen extraction.
6 colors of VZ400 visors available



5 COMFORT:
Patented ergonomic system for fixing textiles.
Micrometric buckle.
Removable anti-swirl bib. Removable anti-fog mask.



2 colors available.

"BEST FIT" by SHARK.

A 3D scanning campaign carried out on a large panel of users allowed us to define the footwear as close as possible to your body shape, combining no less than 4 high-tech textiles guaranteeing:

- Premium quality finishes.
- Semi-firm foams for exemplary support during use.
- Remarkable watertightness and weathertightness.
- A pleasantly soft fit when putting them on.

D-SKWAL 3 FIRSTLAP

7 AERODYNAMICS :

Our CFD (Computational Fluid Dynamics) digital simulations allow us to offer:

- An aerodynamic profile offering optimal stability whatever your speed.
- Optimal internal ventilation.
- 4 air inlets and 4 venturi effect air extractors.
- Air mesh screen position.

Weight: 1500 gr (+/- 50gr)
UNECE 22-06 standard
Size XS - XXL



WWW.SHARK-HELMETS.COM

BACK TO TRACK



Welcome, to an epic imbued with marvels, where the extraordinary becomes ordinary.

1 STRUCTURE :

A shell injected with High-Impact LEXAN™ polycarbonate.
With a high quality material that guarantees optimal mechanical and thermal performance from -10°C to 50°C.

3 Multi-density EPS: Shell associated with specific liner
2 shell sizes.

5 COMFORT :

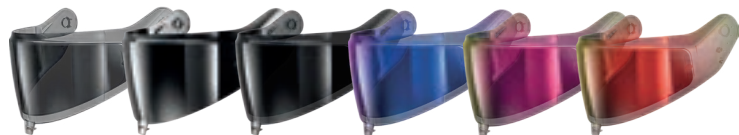
Patented ergonomic system for fixing textiles.
Micrometric buckle.
anti-fog mask.

2 ÉCRAN :

Optical class 1.
Screen equipped with Pinlock® 70 :
UV380 sunscreen and anti-scratch & anti-fog treatment



4 New patented system for rapid, tool-free screen extraction.
6 colors of VZ400 visors available



3 colors available.

6 "BEST FIT" by SHARK.

A 3D scanning campaign allowed us to define the footwear as close as possible to your body shape, combining no less than 5 high-tech textiles guaranteeing:

- premium quality finishes.
- semi-firm foams for exemplary support during use.
- remarkable watertightness and weathertightness.

7 INNOVATIONS :

The RIDILL2 concentrates most of SHARK's innovations for the most comfortable riding experience whatever your use.

RIDILL2

RAGING BEAST

Weight: 1500 gr (+/- 50gr)
UNECE 22-06 standard
Size XS - XXL



WWW.SHARK-HELMETS.COM